

Installing Rolled Rubber Flooring

They say a picture is worth a thousand words.

A lot of customers want to install the rubber rolls themselves so they ask us what are the secrets and tricks to installing rolled rubber flooring?

After numerous requests we have put together the following photo instruction page which we hope will make the installation process a little easier to understand.

At the bottom of this page are the links to pages showing how to install Rubber Tiles, Interlocking Tiles and the other rubber flooring products available on the site.

Before

For our example we are using a small work out room in a National Hotel chain.

The room was carpeted so the normal room and sub floor preparation had to be completed before installation could begin.

The carpet and cove base were removed and the floor was prepped and cleaned thoroughly before the installation begins.



The first roll is cut and dry laid in place.

Notice that the roll was cut about one foot longer and each end has been slightly run up the end walls.



This is done while installing rolled rubber flooring to allow the rolls to relax and acclimate to the temperature of the room and to allow the installers to make accurate trim cuts at each end.



This is done since most rooms are not perfectly square.

If your room is not square, we always recommend ordering your rolls with about a foot of extra length to accommodate any trimming

that needs to take place.

Continue dry rolling out the rest of the room and allow the rubber flooring rolls to acclimate to the room.

Make sure the rolls are tightly butted up next to each other and check to make sure the rolls are straight and without any wrinkles.

It is very important that you take your time and lay the room out properly being extra careful to make sure the seams are good and tight.

Once your rolls are dry laid and acclimated to the room, you can start the end trimming process as show below.



Trimming

Once you are happy with your layout you can start trimming the ends to fit.

You will need a standard utility knife, also know a razor knife, several sharp new blades and metal tape straight edge.

Determine where your cut needs to be and using the metal straight edge as a guide, make several passes through the rubber flooring roll with each pass going a little deeper into the rubber.

The key to making a good cut is to not try and cut the rubber all in one pass but to make several passes until you are all the way through with a nice clean cut.

It is very important that you keep your utility knife sharp so replace the blade as needed.

A dull blade will drag through the rubber and will provide with a clean edge.

Once you have made all of your cuts and your rolls are where you want them to be, it is now time to start spreading the adhesive.



Spreading the Adhesive

To begin spreading your adhesive start by folding back half of the width of the first roll or a little over 2 feet of the width exposing 2 feet of your sub floor the entire length of your roll.

Notice in this group of photos the installer has folded the first roll back about 2 feet from the wall.

You do not want to fold the rolls back lengthwise since this will make it harder to get the rolls back in position once the adhesive is spread.

For installing rolled rubber flooring you want to only use a $\frac{1}{16}$ " Square Notched



Trowel.

Using a larger notched trowel, such as a 1/8" trowel, will spread too much adhesive and you will have problems with the adhesive coming through the seams.



We recommend using a wide blade putty knife to get the adhesive out of the pail and onto the floor in order to help keep your 1/16" notched trowel clean for spreading the adhesive.

Spread the adhesive in a thin layer taking care to not get any adhesive your finished side of the roll.

Be careful not to spread the adhesive too thick and avoid puddling of the

adhesive.

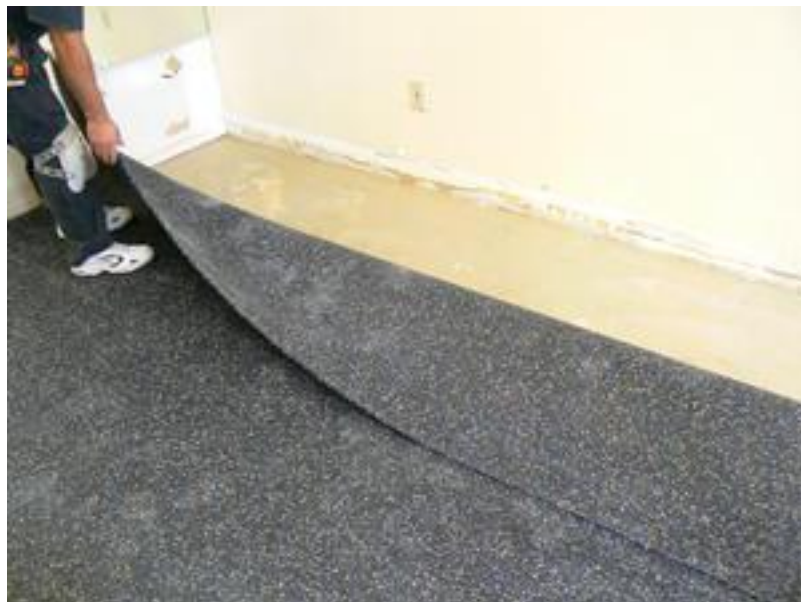
Continue spreading the adhesive until you have neatly covered the entire 2' exposed section of your sub floor.

Your adhesive should look something like the last photo in this section.

Setting the roll into the wet adhesive.

After the adhesive has set for 15 - 25 minutes depending on temperature and humidity.

Please refer to the adhesive manufactures recommendations regarding set time, fold back the 2 feet width of



roll into the adhesive.

Be sure to make all adjustments before the adhesive fully sets.



After the first half of the first roll is set, start folding back at the first seam, half of the first roll and half of the second roll as shown in the photos.



This will expose approximately a 4' wide

section of your sub floor and you are now at the point where you can start covering some ground very quickly.



Once the adhesive is applied you can start folding back the second half of the first roll and then the first half of the second roll.



Yes I know it may sound a little confusing but just remember, once the first 2 feet of the first roll is set and adhered, you will be opening up half of each adjoining roll at each seam so you will be setting one half of the width of each adjoining roll.



Set one half of each roll into the adhesive.

Take extra care to butt up each roll as tightly together as possible to prevent gaps in the seams.

When installing rolled rubber flooring and the installation is done properly, the seams should become almost invisible.





The Finished Floor

All they need to do is to install the cove base and some wall repair and they will be ready to move the fitness equipment back into the gym and the gym will be ready for the guests to enjoy.

As you can see, Installing rolled rubber flooring is not that difficult once you know a few of the installers tricks.

Please feel free to call us if you have any questions and we will be happy to help in any way that we can.

800-279-1693

